

Features

- InduSoft Web Studio Runtime
- PXA270, 520 MHz CPU
- Windows CE 5.0
- Hard Real-Time Capability
- VGA Port Output
- Modbus RTU/TCP (Master, Slave)
- Support eLogger HMI
- Redundant Power Inputs
- Operating Temperature: -25 ~ +75°C



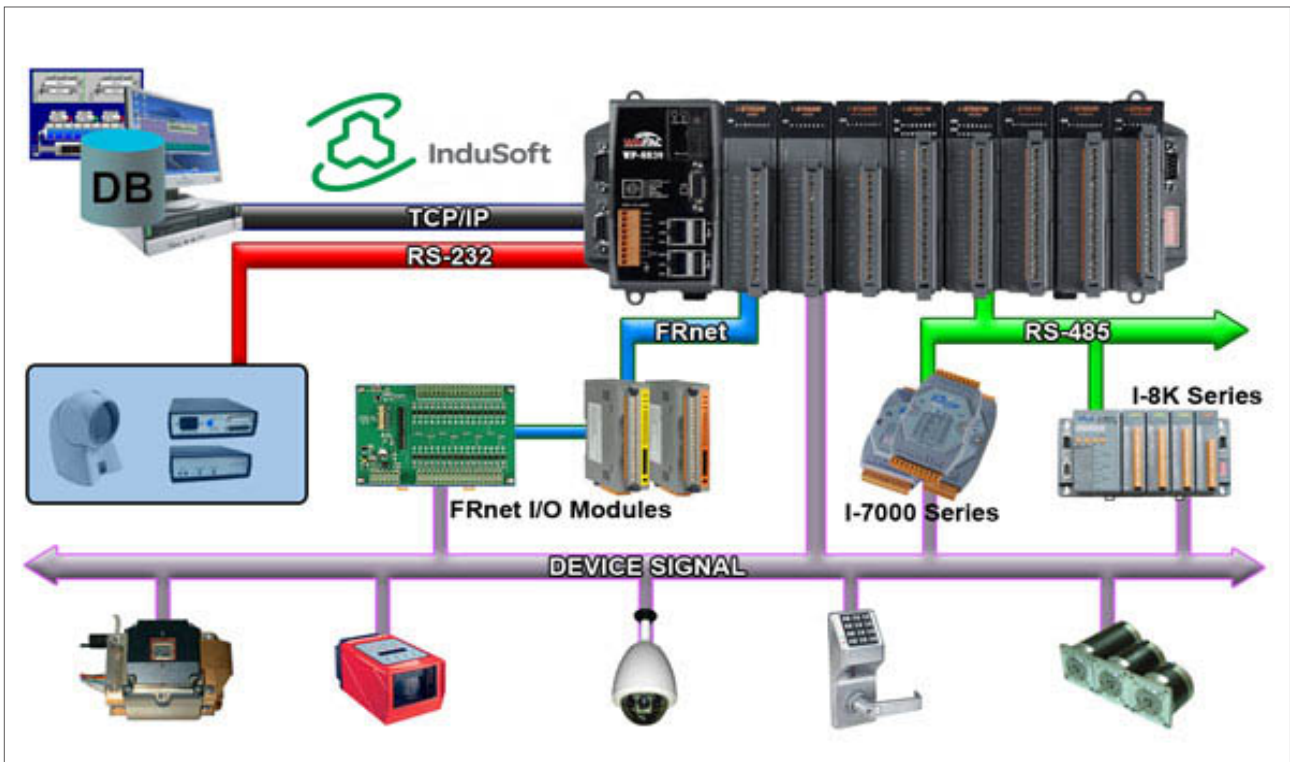
Introduction

ICP DAS WinPAC-8x39 Series (WP-8139/8439/8839) is the new generation WinCE based PAC (Programmable Automation Controller). It features with the powerful InduSoft Web Studio. InduSoft is the most powerful, integrated collection of e-automation development tool that includes all the building blocks needed to develop Human Machine Interface (HMI) and Supervisory Control and Data Acquisition (SCADA) systems.

WinPAC-8x39 equips a PXA270 CPU (520MHz) running Windows CE.NET 5.0 Operating System, variant connectivity (10/100 Base-TX dual Ethernet, RS-232, RS-485, VGA, and USB ports) and 1/4/8 slots for high performance Parallel-type I/O modules (High Profile I-8K series) and Serial-type I/O modules (Hot-Swap High Profile I-87K I/O modules). Memories come with 128 MB SRAM, 512 KB dual battery backup SRAM, 128 MB FLASH & 16 GB microSD. For redundant supporting: dual Watchdog Timers, redundant power inputs, dual battery backup SRAM, dual Ethernet Ports. WinPAC-8x36 Series will upgrade your system!

Applications

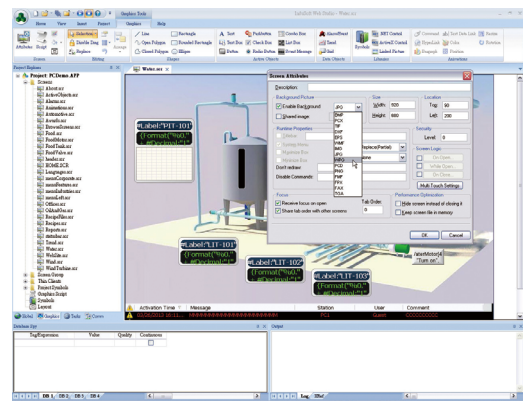
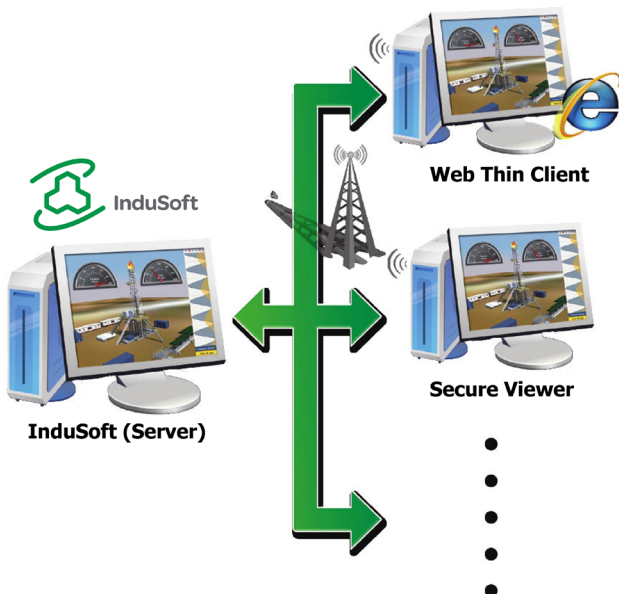
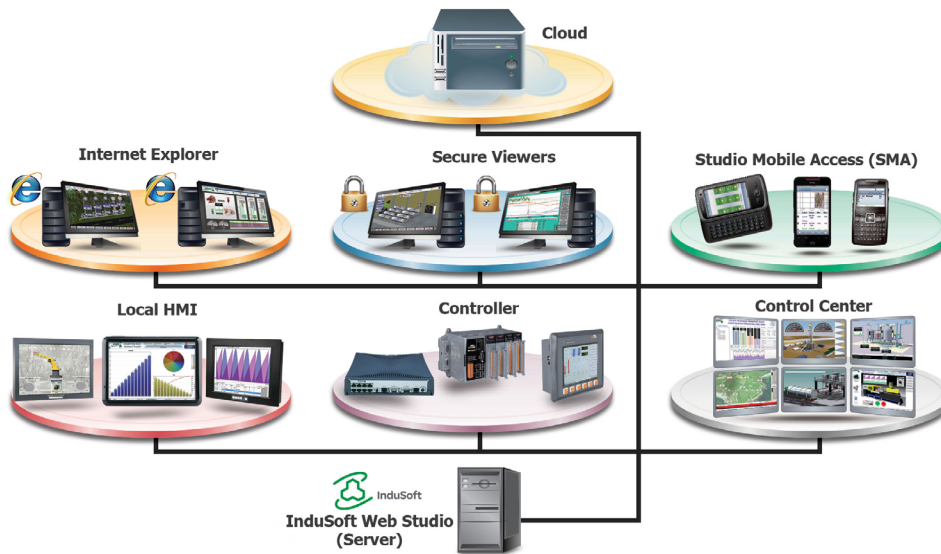
Environment monitoring, factory automation, building management system, industrial machine control, etc.



InduSoft Features

IWS applications run on microcomputers connected in real-time to machines or processors through WinPAC programmable controllers, remote I/O devices, and other data acquisition equipment. These applications consist of animated operator-interface screens, rollable I/O devices, an application tags database, and optional modules such as alarm monitors, trend charts, recipes, schedulers, and a security system.

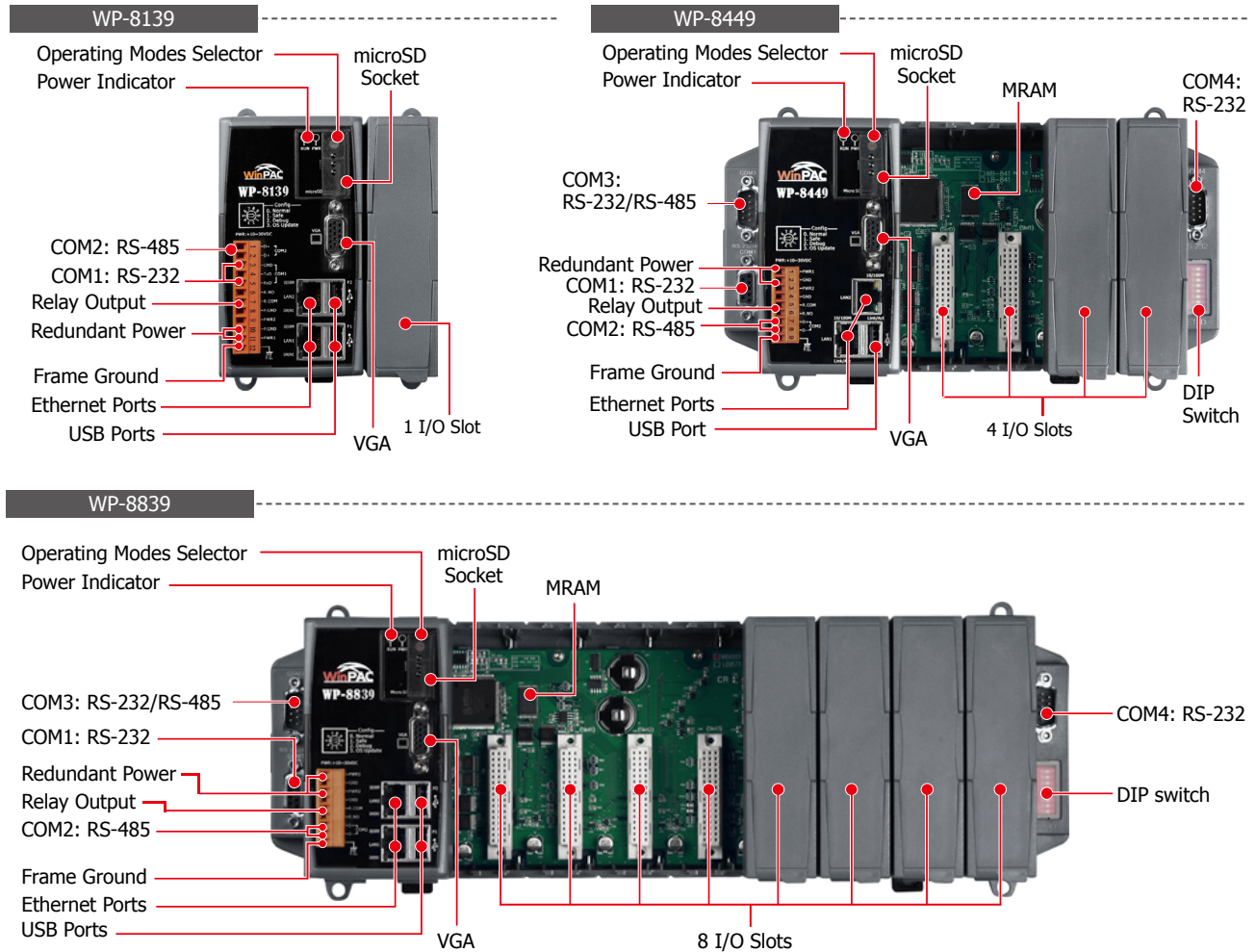
- Intuitive script language with more than 100 standard functions is provided.
- Conform to industry standards such as Microsoft.NET, OPC, DDE, ODBC, XML.
- Full-Featured WinCE-based run-time environment (CE View).
- Dynamic library of symbols - customizable.
- ActiveX container (Windows NT/CE).
- Automatic e-mail (SMTP) and dial-up connection interface supported.
- Provide multi-level security for applications, including the Internet and Intranet.



Specifications

Models	WP-8139	WP-8439	WP-8839	WP-8149	WP-8449	WP-8849
System Software						
OS	Windows CE 5.0					
.Net Compact Framework	3.5					
Embedded Service	FTP server, Web server					
Multilanguage Support	English, German, French, Spanish, Russian, Italian, Korean, Simplified Chinese, Traditional Chinese					
Development Software						
InduSoft Software	InduSoft Web Studio Runtime					
Others	Options: MS eVC++ 4.0 or VS.NET 2005/2008 (VB.NET, C#.NET)					
Web Service						
Web HMI	PC running Internet Explorer can monitor/control PAC via Internet/modem					
Security	Support three levels username and password protection. (high/middle/low)					
CPU Module						
CPU	PXA270, 520 MHz					
SDRAM	128 MB					
Dual Battery Backup SRAM	512 KB; data valid up to 5 years (for retain variables)					
Flash	128 MB			96 MB		
EEPROM	16 KB					
Memory Expansion	microSD socket with one microSD card (support up to 32 GB)					
RTC (Real Time Clock)	Provide second, minute, hour, date, day of week, month, year					
64-bit Hardware Serial Number	Yes, for Software Copy Protection					
Dual Watchdog Timers	Yes					
Programmable LED Indicator	1					
Rotary Switch	Yes (0 ~ 9)					
DIP Switch	-	Yes (8 bits)		-	Yes (8 bits)	
VGA & Communication Ports						
VGA	Yes 640 x 480, 800 x 600, 1024 x 768			Yes 640 x 480, 800 x 600		
Ethernet	RJ-45 x 2, 10/100 Base-TX (Auto-negotiating, LED indicators)					
USB 1.1 (host)	2			1		
COM 0	Internal communication with the high profile I-87K series modules in slots					
COM 1	RS-232 (to update firmware) (Rx/D, Tx/D and GND); non-isolated					
COM 2	RS-485 (Data+, Data-) with internal self-tuner ASIC; 2500 V _{oc} isolated for WP-8131 and WP-8141; 3000 V _{oc} isolated for other models.					
COM 3	-	Yes		-	Yes	
	RS-232/RS-485 (Rx/D, Tx/D, CTS, RTS and GND for RS-232, Data+ and Data- for RS-485); non-isolated					
COM 4	-	Yes		-	Yes	
	RS-232 (Rx/D, Tx/D, CTS, RTS, DSR, DTR, CD, RI and GND); non-isolated					
I/O Expansion Slots						
Slot Number	1	4	8	1	4	8
	Note: For High Profile I-8K and I-87K Modules Only					
Mechanical						
Dimensions (W x L x H)	95 mm x 132 mm x 111 mm: WP-8136, WP-8146 231 mm x 132 mm x 111 mm: WP-8436, WP-8446 355 mm x 132 mm x 111 mm: WP-8836, WP-8846					
Installation	DIN-Rail or Wall Mounting					
Environmental						
Operating Temperature	-25 ~ +75°C					
Storage Temperature	-30 ~ +80°C					
Ambient Relative Humidity	10 ~ 90% RH (non-condensing)					
Power						
Input Range	+10 ~ +30 V _{oc}					
Isolation	1 kV					
Redundant Power Inputs	Yes, with one power relay (1 A @ 24 V _{oc}) for alarm					
Capacity	8 W	25 W	25 W	8 W	30 W	30 W
Consumption	7.3 W	9.1 W	9.6 W	7.3 W	9.1 W	9.6 W

Appearance



InduSoft WinPAC-8000

Ordering Information

InduSoft Default Runtime License: 300 Tags, 3 Drivers		
WP-8139-EN	WP-8149-EN	1 I/O Slot InduSoft based WinPAC-8000 with WinCE 5.0 (OS: English Version)
WP-8439-EN	WP-8449-EN	4 I/O Slots InduSoft based WinPAC-8000 with WinCE 5.0 (OS: English Version)
WP-8839-EN	WP-8849-EN	8 I/O Slots InduSoft based WinPAC-8000 with WinCE 5.0 (OS: English Version)
WP-8139-TC	WP-8149-TC	1 I/O Slot InduSoft based WinPAC-8000 with WinCE 5.0 (OS: Traditional Chinese Version)
WP-8439-TC	WP-8449-TC	4 I/O Slots InduSoft based WinPAC-8000 with WinCE 5.0 (OS: Traditional Chinese Version)
WP-8839-TC	WP-8849-TC	8 I/O Slots InduSoft based WinPAC-8000 with WinCE 5.0 (OS: Traditional Chinese Version)
WP-8139-SC	WP-8149-SC	1 I/O Slot InduSoft based WinPAC-8000 with WinCE 5.0 (OS: Simplified Chinese Version)
WP-8439-SC	WP-8449-SC	4 I/O Slots InduSoft based WinPAC-8000 with WinCE 5.0 (OS: Simplified Chinese Version)
WP-8839-SC	WP-8849-SC	8 I/O Slots InduSoft based WinPAC-8000 with WinCE 5.0 (OS: Simplified Chinese Version)
InduSoft Default Runtime License: 1500 Tags, 3 Drivers		
WP-8139-EN-1500	WP-8149-EN-1500	1 I/O Slot InduSoft based WinPAC-8000 with WinCE 5.0 (OS: English Version)
WP-8439-EN-1500	WP-8449-EN-1500	4 I/O Slots InduSoft based WinPAC-8000 with WinCE 5.0 (OS: English Version)
WP-8839-EN-1500	WP-8849-EN-1500	8 I/O Slots InduSoft based WinPAC-8000 with WinCE 5.0 (OS: English Version)
WP-8139-TC-1500	WP-8149-TC-1500	1 I/O Slot InduSoft based WinPAC-8000 with WinCE 5.0 (OS: Traditional Chinese Version)
WP-8439-TC-1500	WP-8449-TC-1500	4 I/O Slots InduSoft based WinPAC-8000 with WinCE 5.0 (OS: Traditional Chinese Version)
WP-8839-TC-1500	WP-8849-TC-1500	8 I/O Slots InduSoft based WinPAC-8000 with WinCE 5.0 (OS: Traditional Chinese Version)
WP-8139-SC-1500	WP-8149-SC-1500	1 I/O Slot InduSoft based WinPAC-8000 with WinCE 5.0 (OS: Simplified Chinese Version)
WP-8439-SC-1500	WP-8449-SC-1500	4 I/O Slots InduSoft based WinPAC-8000 with WinCE 5.0 (OS: Simplified Chinese Version)
WP-8839-SC-1500	WP-8849-SC-1500	8 I/O Slots InduSoft based WinPAC-8000 with WinCE 5.0 (OS: Simplified Chinese Version)